

MEDITRO CORPORATION

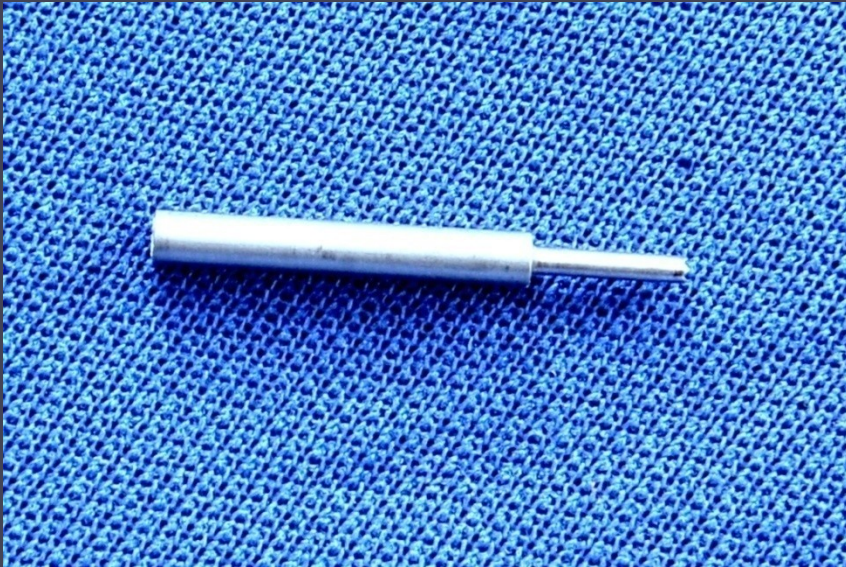
ONE NEEDLE IMPLANTER

• AT present choi & lions implanter are available in market but it can accommodate only one graft, so there are multiple repetitive and unnecessary movements surgeon has to do. This single needle implanter can accommodate 15 grafts at one time. So you can save unnecessary movements



MEDITRO CORPORATION

FUE PUNCH



- The FUE punch is designed for use in the machine hand piece.
- The size available from 0.70mm to 1.20mm.

MEDITRO CORPORATION

TWO NEEDLE IMPLANTER



- AT present choi & lions implanter are available in market but it can accommodate only one graft, so there are multiple repetitive and unnecessary movements surgeon has to do. This double needle implanter can accommodate 30 grafts at one time. So you can save unnecessary movements

MEDITRO CORPORATION

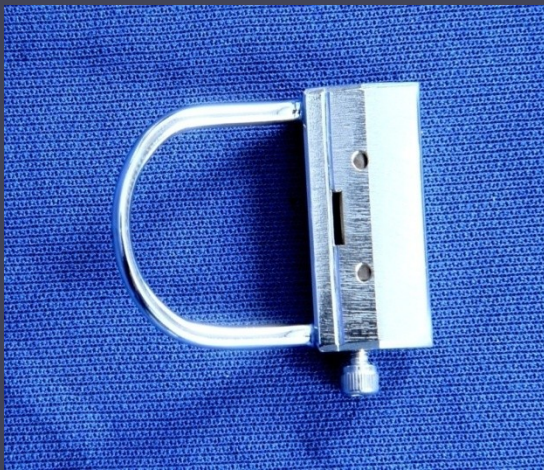
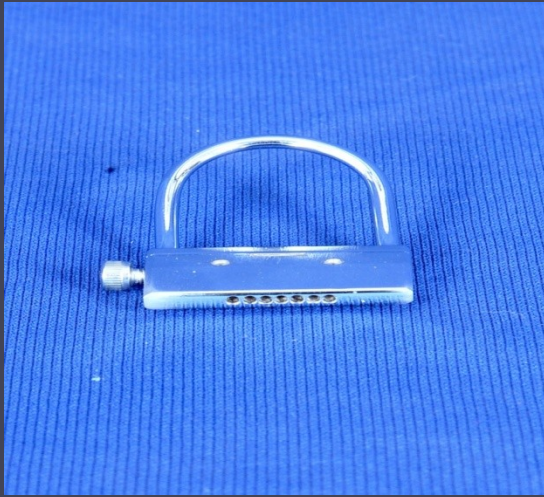
SPECIAL FORCEPS



- This extraction Forcep win the first prize in HAIRCON 2018 for best innovative category. It has 2 grip at different level so can catch the graft from upper 1/3 portion in a better way. It reduces chances of decamping of graft, so reduce the transection rate, and increase the speed of work.

MEDITRO CORPORATION

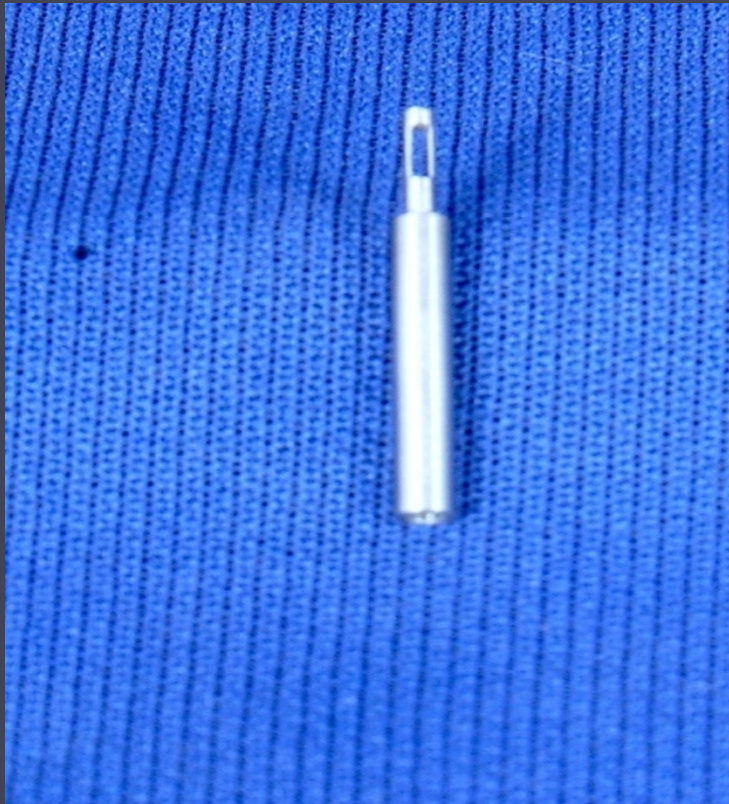
SEVEN NEEDLE PUNCH



Slit making process became very easy with this multisite maker. Here you can use 18/20 gauze needle which are cheap & easily available. You can add 3,5 or 7 needle at a time. You can do sagital / coronal slits with this slit maker. In one stroke you can make 7 slits, you can make brickwall / crisscross pattern. You can make 3000 slits in 15 minutes only

MEDITRO CORPORATION

DOUBLE WINDOW FUE PUNCH



- This punch has 2 window in the shaft, because of this window you can see the graft during insertion of punch and you can modify your angle to decrease the transection rate. Because of window surface area of contact reduces, so less torsion and less chances of transection rate.

MEDITRO CORPORATION

SUCTION DEVICE



During slit making bleeding is the major obstacle, many time we have to work like a blind person as due to bleeding we cannot see the field clearly. We have made one suction device which we can keep in left hand, it has tiny holes in front which sucks the bleed and with left hand we give pressure on scalp which also reduces the bleeding, We can join our regular suction device with.